

**MAKING IT
HAPPEN**

ASSET BASED COMMUNITY DEVELOPMENT

Learning Resource Pack

Developed through learning with and alongside
our wonderful communities in East Sussex

Section One: Introduction

Section Two: Start Small

Section Three: Build Relationships

Section Four: Make Connections

Section Five: Support communities to take the
lead; communities need allies.

Section Six: Equality and Social Justice

Section Seven: Leadby Stepping back

Section Eight: Demonstrating the value of ABCD

Section Nine: Evaluation



making-it-happen.org.uk

4

MAKE CONNECTIONS

- a **What does it mean in practice?** p. 3
- b **Tools**
 - 6 assets to connect p. 5
 - Community Health Assets p. 6
 - Asset mapping p. 7
 - 5 H's p. 8
 - Know, teach, learn p. 9
 - Top 100 p. 10
 - Line and squiggle game p. 11
 - Hosting introductions p.12
- c **Examples**
 - Big Sparks Asset Mapping p. 13
 - Bexhill Men's Shed p. 14
 - Bexhill connections mapping p. 15
 - Hastings connections p. 16
- d
 - **Note:** other tools from the resource pack would work here

What does it mean in practice?

CONNECTING WITH OTHER PEOPLE, GROUPS, PLACES, KNOWLEDGE AND INSTITUTIONS CREATES OPPORTUNITIES TO SHARE RESOURCES, WORK TO STRENGTHS, POOL KNOWLEDGE AND COLLABORATE, WHILST MINIMISING THE RISK OF DUPLICATION.

This section shares tools and ideas to get people thinking about what they already know or have; or what, or who, might already be present in a community that can help an individual, group or community achieve their goal.

There are examples which illustrate the rippling out of connections and how this can lead to collaboration, resource sharing, knowledge sharing and mutual support.



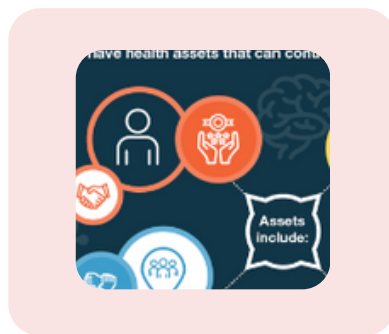
Tools

These tools can help identify the whole range of assets, positives and possibilities in people and places.

Six Assets to Connect



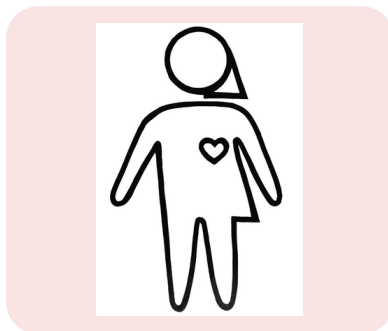
Community Health Assets



Asset Mapping



5 H's



Know Teach Learn



Top 100



Line and Squiggle



Hosting Introduction



6 Assets to Connect

Asset Based Community Development builds on the positives which already exist in every neighbourhood and locality. The starting point for any development or change are these preexisting assets, so building an understanding of what is present is crucial.

There are 6 types of assets to consider:



Community Health Assets

Public Health England also recognised the importance of community assets:

“Community life, social connections and having a voice in local decisions are all factors that have a vital contribution to make to health and wellbeing. These community determinants build control and resilience and can help buffer against disease and influence health-related behaviour”.



Healthmatters



Asset Mapping

This is a great activity to do in communities, at events, or in groups. It offers a visual way to explore different assets which may be present in an area or a community. This can be used to identify buildings, venues, bumping spots, groups and other things which local people care about. It can be done with paper and pens, or with more elaborate maps and models.

Resources

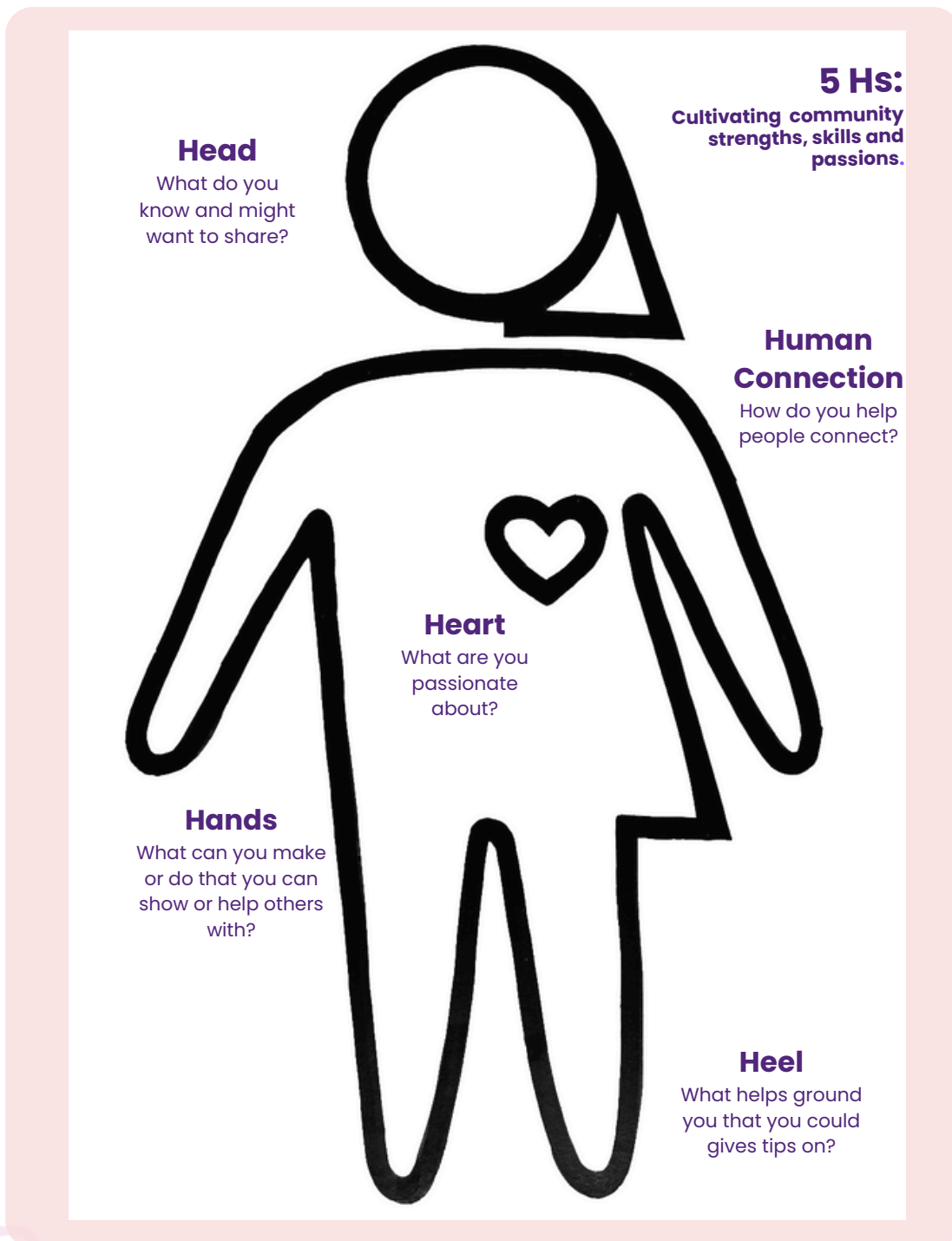
- Large local map, or large pieces of paper
- cocktail sticks & bluetack, sticks, pins or pegs, and labels
- Pens and paper

Can be done anywhere and anyhow - can be about mapping ideas, people, connections, places, and things. It can be used to drill (down) into an idea (and to) help kick start a plan including to identify what you have and what you need.



The 5 H's

This is an activity designed to help people tap into the things they enjoy or care about. It can be a great way to uncover shared interests and passions within a group or as an ice breaker at an event.



Know Teach Learn

This activity is great as a follow up to the 5H’s activity and provides an opportunity to discover how peoples passions, gifts and interests can be productive and shared.

- Ask people to decide which of the gifts they are passionate about they would share with others
- Each person writes this in the first column
- Ask people to write their name in the boxes according to what they know about, what they could teach others and what they would like to learn about

Skills and Abilities:	Do you know:	Could you teach:	Like to Learn:

With thanks to the Jeder Institute who introduced us to this version of the activity

Top 100

Stakeholder Mapping

Consider your intention. Are you mapping stakeholders or partners? Increased public participation? Are you mapping with the community? This can work in many contexts, and helps ensure diversity. The process can be repeated as the core group grows, and it can be used for community events, forums, and conversations around issues.

Instructions

1. Ask all core group members to list everyone they know in each sector.
2. Each member then identifies the top 3 people listed who they have a personal relationship with.
3. 'Craft the ask': consider how to invite the people listed to a planning session, or to be part of a group, process or project.

Business

- 1.
- 2.
- 3.
- 4.

Statutory / NGO

- 1.
- 2.
- 3.
- 4.

Voluntary / community / social enterprise

- 1.
- 2.
- 3.
- 4.

Lived experience

- 1.
- 2.
- 3.
- 4.

With thanks to the Jeder Institute who introduced us to this version of the activity.

Line and Squiggle

This game was introduced to the Team by the Hospitable Environment Project, one of the many wonderful grass roots community arts organisations we have worked with. It makes a great ice breaker **at the start of a learning or training activity.**

The aim is to encourage

- Playfulness
- Acceptance
- Curiosity
- Empathy

You will need

- Colour pens
- A3 paper
- Post it notes

Instructions

- Each person has an A3 piece of paper and coloured pens.
- Everyone has 20 seconds to make a mark on the paper. It can be a line, a squiggle or anything.
- After 20 seconds pass the paper to the right for the next person to add to the drawing.
- Continue this until everyone has had a go on each image and the first drawer receives their paper back.
- Ask everyone to consider creating a title for their artwork and to write it onto a post it.
- Go around the room and invite people to introduce themselves and the title of their artwork.
- Put up each piece on the wall.
- Allow for reflection and themes to be discussed amongst participants.
- Explore creating a title for the 'gallery' of artworks.

Visit: <https://www.hospitable-environment.com/>



Hosting Introductions

Hosting introductions between local people and assets can lead to fantastic outcomes. This example from Bexhill illustrates how making connections can lead to skill sharing, resource sharing, a more connected community, pride and friendship and much, much more.



Big Sparks Asset Map

At the Big Sparks event held in November 2022 the Making it Happen Team worked with representatives from community groups from across East Sussex to plan and deliver this major **celebration of all things community led**. The event included an asset mapping activity. Participants were tasked with **mapping assets** in their area (using the 6 core assets to connect as categories) and were asked to respond to the following questions:

- What are the **places or things that matter** to you?
- **What would you change** and how?



Bexhill Men's Shed

The CDW met with a group of volunteers who had an **idea** to set up a local Men's Shed. The CDW invited the group to attend the Big Sparks Event. This provided opportunities to make **connections** with other local sheds and projects. This enabled them to **learn** from others within communities. This helped develop the shed idea, **share** knowledge and overcome barriers along the way.

They now have strong connections with other local established Men's Sheds. This is often where learning is shared around governance, health & safety and funding opportunities.

They have even been looking at opportunities for joining other sheds in a joint funding application.

This is a picture of Bexhill Men's Shed volunteers at The Big Sparks Event. They still mention this as a memory of the beginning of their journey. This was an amazing opportunity to **connect** and **learn**.



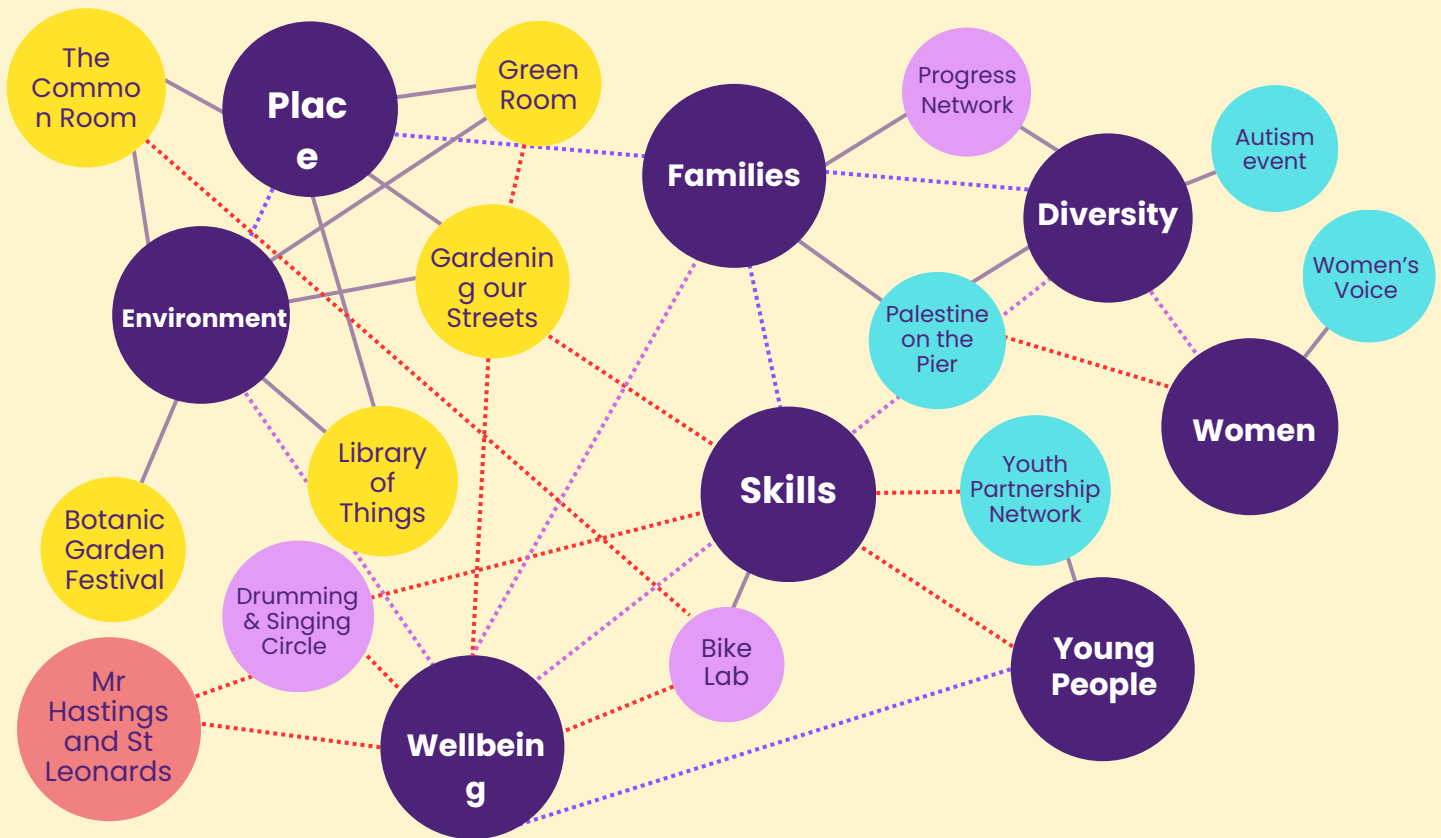
Bexhill Connection Mapping

Bexhill Men's Shed created this visual representation of connections they made which have brought funding and resources, or links to projects they have supported.



Hastings Connection Mapping

In Hastings the Development Worker produced a map of the connections between some of the groups they had worked with to illustrate the **cross pollination of ideas and interests**.



- Castle
- St Leonards
- Hastings Borough
- Linked but not funded through MIH